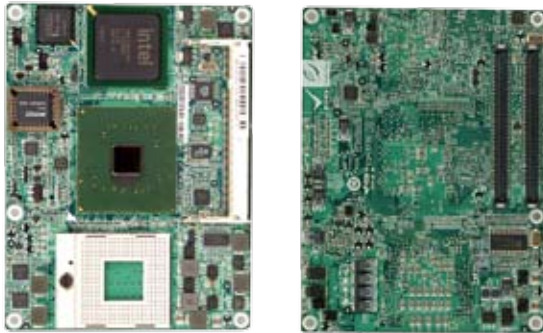


# ICE-9152 / 9102

COM Express Basic Type 2 Module, Socket 479 Intel® Pentium® M / Celeron® M CPU, VGA/LVDS, LAN, CF, SATA, USB 2.0 and Audio



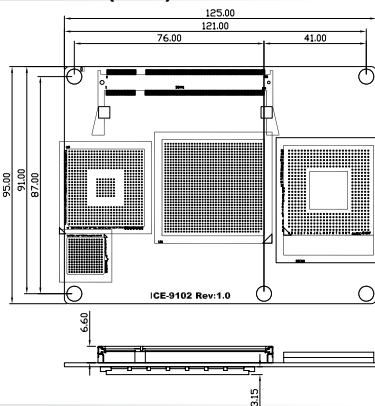
## Features

1. COM express type 2 basic module
2. Support 1x PCIe x16, 4 x PCIe x1, 4 x PCI slots for expansion
3. Support dual display for VGA + LVDS
4. Support 6 x USB 2.0, 2 x SATA, 1x DE

## Specifications

- ◆ CPU  
Socket 479 Intel® Pentium® M, Celeron® M processor with a 533/400 MHz FSB on board  
Intel® Celeron® M 1GHz zero cache or 1 GHz 512KB cache processor
- ◆ System Chipset  
Intel® 915GME + ICH6M (ICE-9152)  
Intel® 910GME + ICH6-M (ICE-9102)
- ◆ BIOS  
AMI Flash BIOS
- ◆ System Memory  
One 200-pin 533/400MHz DDR2 SO-DIMM support up to 2GB (ICE-9152)  
One 200-pin 400MHz DDR2 SO-DIMM support up to 2GB (ICE-9102)
- ◆ Ethernet  
One Intel® 82541PI GbE Chipset
- ◆ I/O Interface  
8 x USB 2.0 (to base board)  
2 x SATA (to base board)  
1 x IDE channel (to base board)
- ◆ Expansions  
1 x PCIe x16 signal to base board (ICE-9152)  
4 x PCIe x1 signal to base board  
4 x PCI, 32 bit / 33 MHz PCI bus to base board
- ◆ Display Interface  
VGA Integrated in Intel® 915GME/910GME Signal (to base board)  
18/24-bit dual channel LVDS Signal (to base board)
- ◆ Watchdog Timer  
Software programmable supports 1 ~255 sec. system reset (Depend on Super I/O of base board)
- ◆ Power Supply  
ATX / AT supported
- ◆ Power Consumption  
12V@1.33A (Intel® Celeron® M 373 1G/512 L2 cache, DDR2 1GB/ 533Mhz)
- ◆ Temperature:  
Operation: 0°C ~ 60°C (32°F ~ 140°F)
- ◆ Humidity: Operation: 5% ~95 non-condensing
- ◆ Dimensions: 125 mm x 95 mm

## Dimensions (mm)



## Packing List

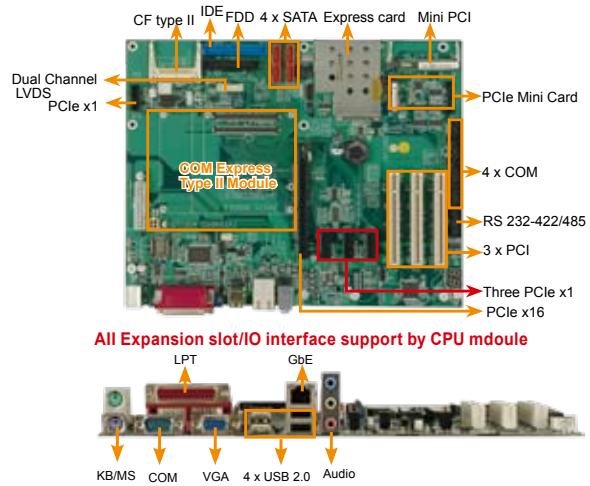
1 x ICE-915/9102 single board computer	
1 x Heatspreader	
1 x Heatsink (ICE-9102)	
1 x Cooler (ICE-9152)	
1 x Utility CD	1 x QIG

## Ordering Information

Part No.	Description
ICE-9152-R10	COM express Socket 479 Intel® Pentium® M / Celeron® M CPU with VGA/LVDS, GbE, USB 2.0, SATA and audio
ICE-9102-1GZ-R10	COM express ULV Intel® Celeron® 1GHz zero cache CPU with VGA/LVDS, GbE, USB 2.0, SATA and Audio
ICE-9102-1G512-R10	COM express ULV Intel® Celeron® 1GHz 512K cache CPU with VGA/LVDS, GbE, USB 2.0, SATA and audio
ICE-DB-9S-R10	Base board for COM express Type 2 modules

# ICE-DB-9S

Base Board for COM Express Type 2 Module



All Expansion slot/I/O interface support by CPU module

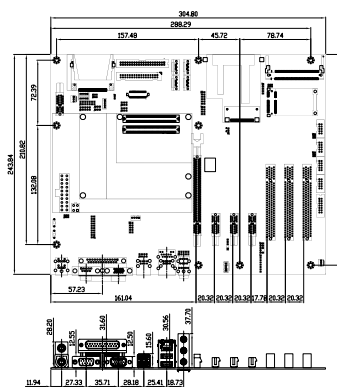
## Features

1. ATX Form factor Base board for COM Express type 2 Module
2. Support 1x PCIe x16/4x PCIe x1, 3 x PCI for expansions
3. Second I/O support up to 6 x COM Ports
4. COM2 /COM3 with 5V/12V power by jumper selection

## Specifications

- ◆ CPU Module Interface  
Supports COM Express Compact / Basic module using connector pin out Type 2
- ◆ Display Interface  
VGA DB15 connector  
18/24-bit dual channel LVDS  
TV-out interface
- ◆ Expansions  
1 x PCIe x16      4 x PCIe x1  
3 x PCI, 32 bit / 33 MHz PCI bus  
1 x PCIe Mini card    1 x Express Card  
1 x Mini PCI
- ◆ I/O Interface  
4 x SATA/SATA II    1 x IDE  
1 x CF type II  
5 x RS-232 (COM2/COM3 with 5V/12V power)  
1 x RS-232/422/485    2 x PS2 KB/MS  
6 x USB 2.0            1 x LPT  
1 x FDD
- ◆ Audio  
Realtek ALC888 for 7.1 channels HD audio  
1 x Mic-in, Lin-in, Lin-out connector  
1 x Front Audio
- ◆ Ethernet Connector  
1 x RJ-45 connector for GbE
- ◆ Super I/O  
First Super I/O: Winbond W83627EHG  
Second Super I/O: Fintek F81216
- ◆ Digital I/O  
8-bit digital I/O, 4-bit input/4-bit output by Winbond W83627EHG  
8-bit digital I/O, 4-bit input/4-bit output by Fintek F81216
- ◆ Infrared Interface  
1 x Infrared interface by pin header
- ◆ Power Supply  
ATX / AT support
- ◆ Fan  
3 x Fan Connector, Support smart fan for CPU Fan (FAN1)
- ◆ Temperature  
Operation: 0°C ~ 60°C (32°F ~ 140°F)
- ◆ Humidity  
Operation: 5% ~95 non-condensing
- ◆ Dimensions  
304.8 mm x 243.8 mm ( 12" x 9.6" )

## Dimensions (mm)



## Packing List

1 x COM express base board	2 x SATA cable (P/N: 32000-062800-RS)
1 x Dual ports RS-232 cable (P/N: 19800-000051-RS)	1 x Mini jumper pack
1 x Utility CD	1 x QIG

## Ordering Information

Part No.	Description	Part No.	Description
ICE-DB-9S-R10	Base board for COM express Type 2 Modules	32200-000052-RS	40-pin 3.5" IDE cable
19800-000082-RS	RS-232/422/485 cable	32200-000017-RS	FDD cable
32100-088600-RS	SATA power cable	19800-000049-RS	LPT cable