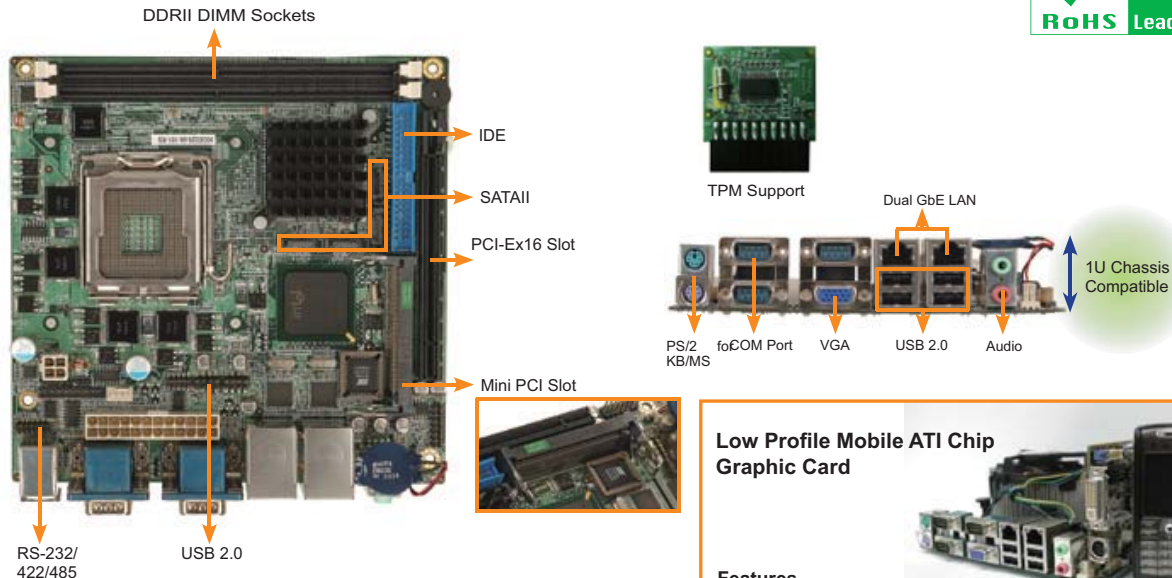


KINO-9454

Mini-ITX Motherboard with Intel® Pentium® 4/ Pentium® D
1066/800/533MHz CPU, SATAII, Dual PCI-E GbE, USB 2.0 and Audio



Feature

1. Intel® Pentium® 4/ Pentium® D FSB 1066/800/533MHz processor
2. Analog CRT integrated in Intel® 945G
3. DDRII 667/533/400MHz DIMM socket support up to 4GB
4. Dual BROADCOM BCM5787 for PCI express GbE

Low Profile Mobile ATI Chip Graphic Card

Features

- ◆ Low Power: ATI 1600 Mobile Graphic Chip
- ◆ Low Profile: **8-cm Low Profile**
- ◆ DVI/ VGA/ HDTV/ Dual channel 24-bit LVDS Output
- ◆ PCI-E*16 High Performance

Specification

DDRII 667

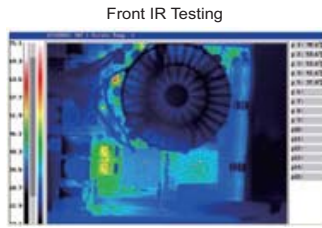


- ◆ CPU
LGA 775 Intel® Pentium® D/4/Celeron® D with 533/800/1066 MHz FSB
- ◆ System Chipset
Intel® 945G + ICH7
- ◆ BIOS
AMI BIOS Label
- ◆ System Memory
2 x 240-pin Dual channel DDRII 400/533/667 Mhz up to 2GB
- ◆ Ethernet
Dual Broadcom BCM5787 PCI-E GbE with ASF2.0 remote control support.
- ◆ I/O
8 x USB 2.0
4 x SATAII-300
1 x IDE
3 x RS-232
1 x RS-232/422/485
2 x PS/2 for KB/MS
1 x 20-pin LPC (TPM Module)
- Expansion
1 x PCI-E x16(Support PCI-Ex1/2/4/8/16 PCI-E add on cards)
1 x Mini PCI

- ◆ IrDA
1 x IrDA by pin header
- ◆ Super I/O
ITE8712
- ◆ Digital I/O
8 bit digital I/O, 4 input / 4 output by super I/O
- ◆ Audio
Realtek ALC655 with AC'97 codec
- ◆ Display
Analog CRT integrated in Intel 945G
- ◆ Watchdog Timer
Software programable 1-255 sec. by supper I/O
- ◆ Power Supply
ATX support
- ◆ Power Consumption
5V@1.8A, +12V@5.81A, +3.3V@3.49A, 5VSB@0.37A (Pentium 4 3.06GHz, DDR2 533MHz 1GB*1) -- 3D MARK
- ◆ Temperature
Operation: 0 ~ 60° C (32 ~ 140° F)
- ◆ Humidity
Operation: 5% ~ 95% non-condensing
- ◆ Dimension
170 mm x 170 mm
- ◆ Weight
GW: 1100 g; NW: 400 g

Real time Thermal Testing

Real Time thermal testing shows the thermal handling ability of KINO-9454



Low Profile design for Embedded chassis

ECK-3699G

The Embedded solution of KINO-9454

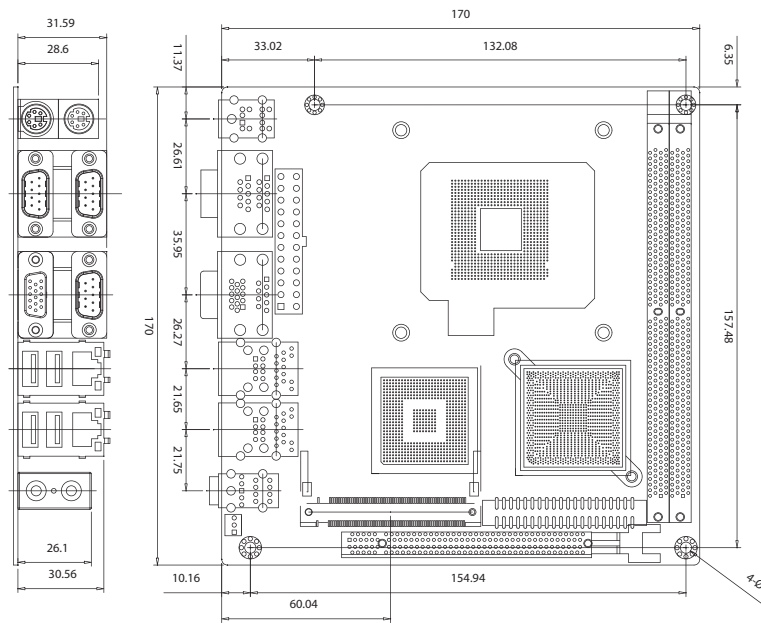


1U Chassis Compatible with rich I/O interface



1U Chassis Compatible

Dimension



Packing List

1 x KINO-9454 Single Board Computer	1 x I/O Shielding (P/N: 41003-0186C0-00-RS)
1 x IDE Cable (P/N: 32200-000052-RS)	1 x Mini Jumper Pack
1 x SATA Power Cable (P/N: 32100-088600-RS)	1 x Utility CD
2 x SATA Cable (P/N: 32000-062800-RS)	1 x QIG (Quick Installation Guide)

Ordering Information

Part No.	Description
KINO-9454-R10	Mini ITX Motherboard with Intel Pentium D 1066MHz Processor, Dual PCI-E GbE, SATAII and Audio
PVGA-M1600L	ATI M56P mobile grade PCI Express Graphic Card with VGA,DVI, 1080i HDTV and dual channel 24-bit LVDS interface.
32200-000077-RS	RS-232/422/485 Cable
CB-USB02-RS	USB Cable
CF-520-RS	CPU Cooler
CF-775A-RS	CPU Cooler