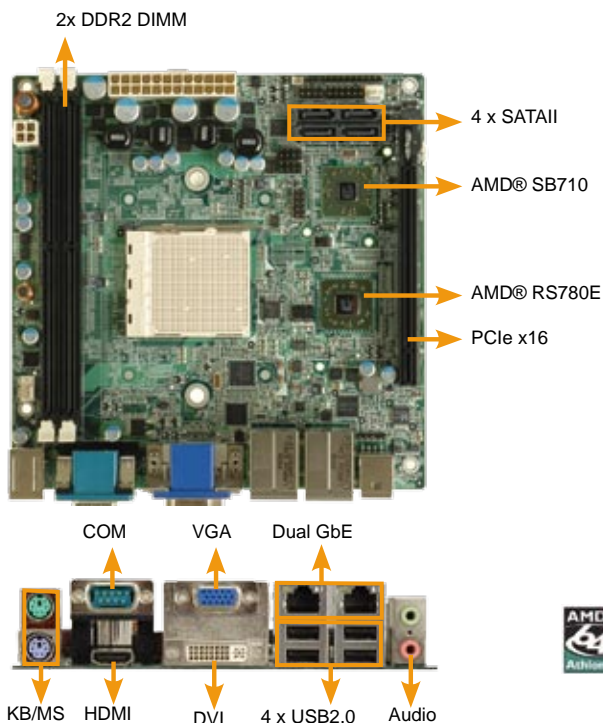


# KINO-780AM2

Mini-ITX SBC with Socket AM2 for AMD® Althon™64, Althon™64 X2, Sempron CPU, VGA/DVI/HDMI, SPDIF-out, Dual PCIe GbE, USB2.0, SATAII



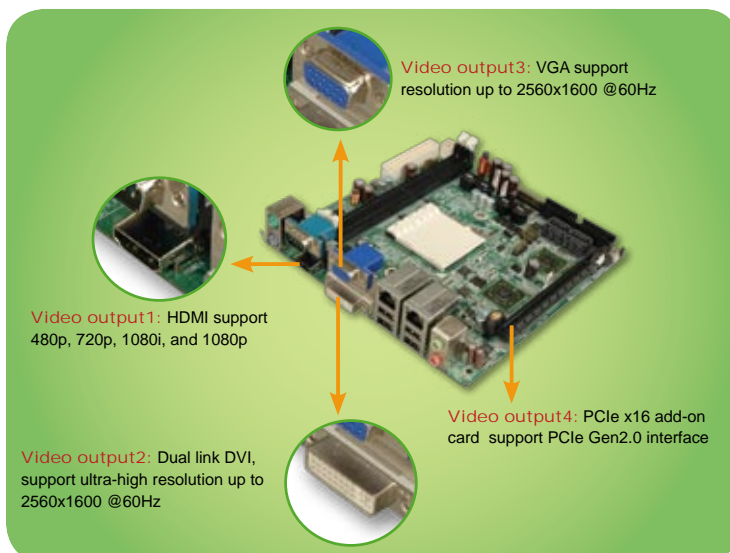
## Specifications

- ◆ CPU
  - AMD® Socket AM2 Althon™64, Althon™64 X2, Sempron CPU with 2600MHz Hyper Transport 3.0 support
- ◆ System Chipset
  - AMD® RS780E + SB710
- ◆ BIOS
  - AMI BIOS
- ◆ Memory
  - Two 240-pin 667/800 DDR2 dual-channel SDRAM DIMMs supported (system max. 4GB)
- ◆ Ethernet
  - Dual Realtek PCIe RTL8111CP GbE Chipsets
- ◆ I/O Interface
  - 8 x USB2.0 (4 on rear IO, 4 by pin header)
  - 4 x SATAII
  - 1 x RS-232
  - 1 x PS2 for KB/MS
- ◆ Graphic
  - ATI Radeon HD3200 Graphic core for DX10 support
- ◆ Display Output
  - VGA integrated in the AMD® RS780E (Max. resolution 2560x1600@32bpp)
  - Support HDMI resolution up to 1080p integrated in the AMD® RS780E
  - Dual link DVI-D integrated in the AMD® RS780E (Resolution 2560x1600)
- ◆ Expansion
  - 1x PCIe x16
- ◆ Digital I/O
  - 8-bit digital I/O, 4-bit input/ 4-bit output
- ◆ Super IO
  - Fintek F71859
- ◆ Audio
  - Realtek ALC888 HD Codec
- ◆ Watchdog Timer
  - Software Programmable support 1~255 sec. System reset
- ◆ Power Supply
  - ATX power supply
- ◆ Power Consumption
  - 5V@4.8A, 12V@0.22A, Vcore\_12V@12.69A, 3.3V@0.54A (AMD® Phenom X4 9950 CPU)
- ◆ Temperature
  - Operation: 0°C ~ 60°C (32°F ~ 140°F)
- ◆ Humidity
  - Operation: 5% ~95% non-condensing
- ◆ Dimension
  - 170mm x 170mm
- ◆ Weight
  - GW: 1000g / NW: 450 g

## Packing List

- 1 x KINO-780AM2 single board computer
- 4 x SATA cable (P/N: 32000-062800-RS)
- 1 x I/O shielding (P/N: 45014-0028C0-00-RS)
- 1 x Mini Jumper Pack
- 1 x Utility CD
- 1 x QIG(Quick Installation Guide)

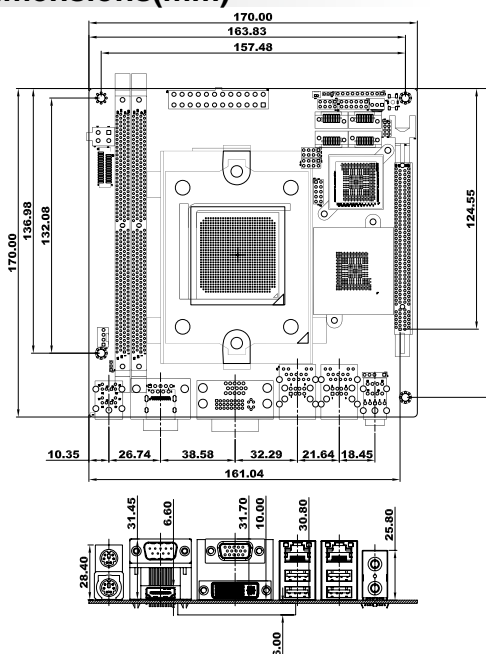
ON board Dual display independent by VGA+DVI-D, VGA+HDMI:



## Features

1. AMD® RS780E integrated Radeon HD3200 graphic core for UVD, MPEG2, and H.264/AVC Full HD Decoder
2. DDR2 667/800MHz memory dual-channel DDR2 DIMMs support up to 4GB
3. Dual Display support by VGA + DVI-D/HDMI + VGA
4. AMD® Socket AM2 Althon™64, Althon™64 X2, Sempron CPU with 2600MHz Hyper Transport 3.0 support
5. ATI Radeon HD3200 Graphic core for DX10 support

## Dimensions(mm)

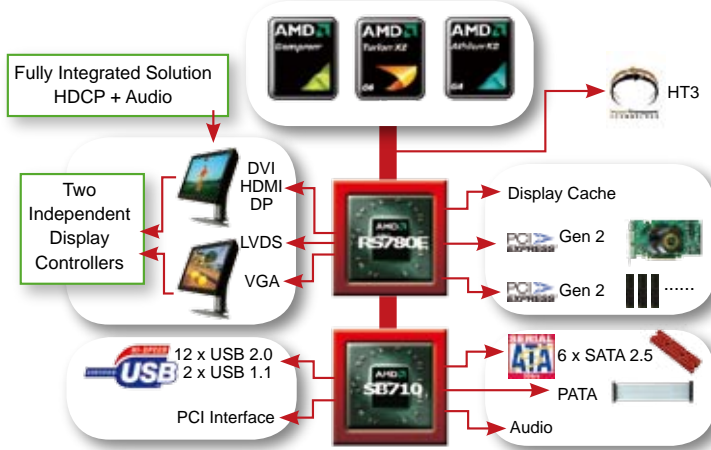


## Ordering Information

Part No.	Description
KINO-780AM2-R10	Mini-ITX SBC with Socket AM2 for AMD® Althon™64, Althon™64 X2, Sempron CPU, VGA/DVI/HDMI, SPDIF-out, Dual PCIe GbE, USB2.0, SATAII
CB-USB02-RS	Dual USB cable
32100-088600-RS	SATA Power cable
CF-AM2-RS	Socket AM2 CPU cooler

## RS780E/SB710 Introduce

2009 New Platform

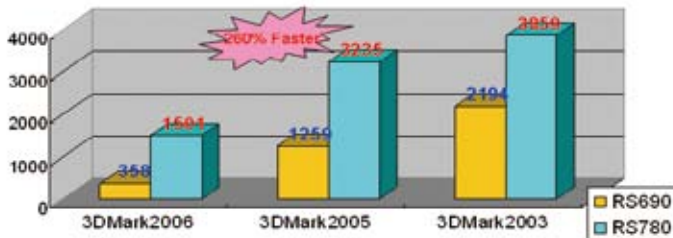


RS780E key advantage over M690E/T

Feature	RS780E/T+ SB710	M690E/T+ SB600
HyperTransport™ Interface	HT3	HT1
Graphic Core	Radeon 3200	Radeon 1250
DirectX® Support	DX10	DX9
Video Decode	UVD – VC-1, MPEG2, and H.264/AVC Full HD Decode	MPEG2 Decode Only
Side-port Memory Interface	DDR2-800, DDR3-1066	DDR2-667
HDMI/DVI	1080p	1080i
PCIe® Graphics	1 x16 or 2 x8 Gen 2	1 x8 Gen 1
Display Port	up to 2	NA
Max Resolution VGA	2560x1600@32bpp	2048x1536@32bpp
USB Ports/Controller	12x USB 2.0 + 2x USB 1.0	8x USB 2.0
SATA	6x SATA 2.5	4x SATA 2.0
eSATA	Supported	NA

## The Best Graphic Core

AMD RS780E integrated Radeon HD3200 graphic core supports UVD – VC-1, MPEG2, and H.264/AVC Full HD decoder is 260% faster than AMD RS690 series in Benchmark performance testing



Test configuration:  
AMD Phenom 9500 2.2GHz CPU,  
2GB DDR2-800, WD 320GB HDD

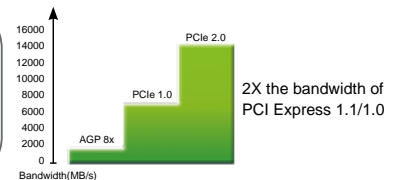
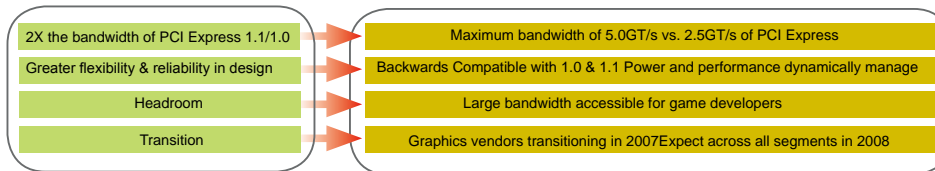
Resolution	Benchmark	RS690	RS780
1280x1024x32	3DMark2006	358	1501
1024x768x32	3DMark2005	1259	3235
1024x768x32	3DMark2003	2194	3859

On board 128MB DDR3 Sideport memory enhance 10-15% graphic performance

## Next Generation PCIe Gen2.0 Support



PCI Express **Gen. 2.0 Benefits**



## Value-added Display output

Dual link DVI interface

KINO-780AM2 high performance SBC equipped with the Dual link DVI interface which support resolution up to 2560x1600 @60Hz, video performance is equal to high-end video cards.

The 30-inch widescreen monitor offers a massive viewing area that supports multi-window



### Dual link DVI benefit

- Support WQXGA display
- Support ultra-high resolution up to 2560x1600 @60Hz
- Single-link DVI: 1600x1200 @60Hz with standard timings, and 1920x1200 @60Hz with reduced blanking timings.
- Dual-link DVI: 2560x1600 @60Hz

New Multimedia Interface

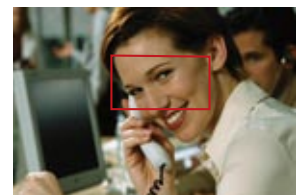
KINO-780AM2 high performance SBC equipped with the High-Definition Multimedia Interface (HDMI) which is a compact audio/video interface for transmitting uncompressed digital data delivering high-definition video support 1080p resolution which equates to 1,920x1,080 pixels, it also supports industry standard EIA-861B video modes including 480p, 720p, 1080i, and 1080p



Resolution	Dimensions	Total Pixels
480i	640x480	307,200 pixels
720p	1280x720	921,600 pixels
1080p	1920x1080	2,073,600 pixels



720p  
1,280x720 pixels



1080p  
1,920x1,080 pixels