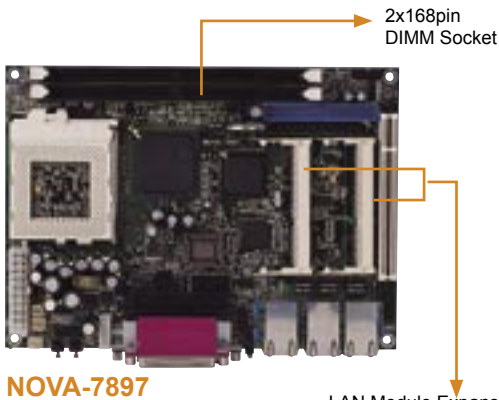


NOVA-7898

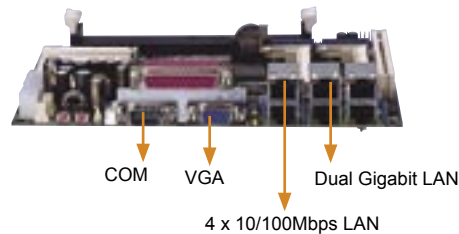
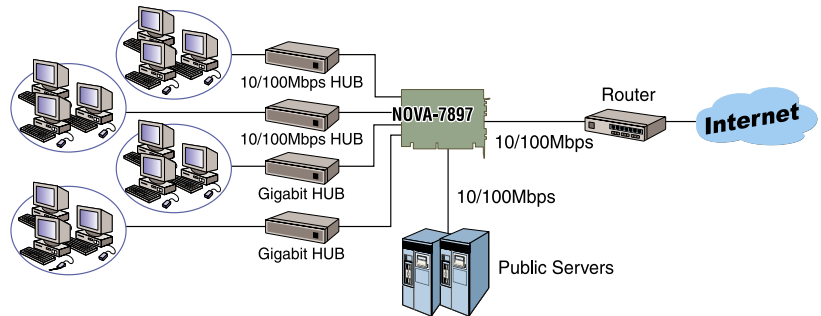
5.25" Disk size small form factor, Socket 370 base embedded board with 6x LAN for networking applications

Dual Gigabit LAN Support



NOVA-7897

LAN Module Expansion Socket (Socket PCI Connector)



NOVA-7898

(Printer port, VGA port by pin header)



FEATURES

- ◆ Supports Intel Tualatin Socket-370 PIII/ Celeron 133MHz FSB
- ◆ Supports up to Six LAN for networking management application like firewall or VPN Gateway IP security management
 - Dual 10/100Mbps LAN controller onboard i82562E + i82559
 - 2 x expansion socket interface for LAN module up to Six LAN
- ◆ LAN Module:
 - LM -2GN Dual Intel 82540/82541 Gigabit Ethernet Module.
 - LM -2G dual Gigabit LAN modules for high speed networking appliance.
 - LM-102 dual LAN module for Internet / Intranet server load balance or VPN Gateway appliance
 - LM-SSLA SSL Module with SSL Accelerator for advance WEB server SSL check performance (Rainbow Solution)
- ◆ Provides 2x DIMM socket for System memory up to 512MB
- ◆ Provides 1x PCI slot for expansion



LM-102R



LM-102N

(can accept one or two modules per NOVA-7897/7898)



LM-2GN

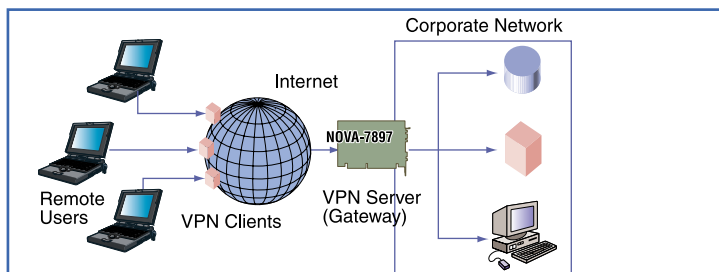
(only accepts onemodule per NOVA-7897)



LM-SSLA



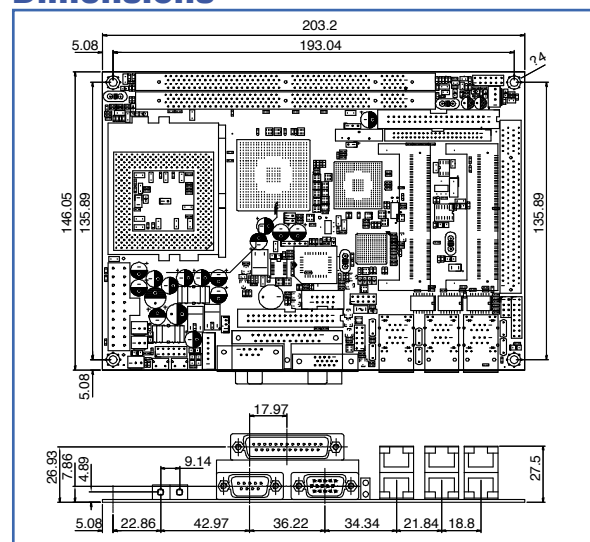
LM-2G



Why do you need the NOVA-7897 with LM-SSLA?

Virtual Private Networks (VPN) is rapidly becoming the universally accepted method for remote access. VPNs enable you to take advantage of the power of the Internet by providing a private tunnel through the public cloud. This in turn reduces costs and enhances productivity from your remote access applications. Although a VPN is private, it doesn't mean that it is secured. Protected solely by passwords, VPNs are very vulnerable. Therefore, our NOVA-7897 with LM-SSLA is available to enhance the security of Virtual Private Networks.

Dimensions



NOVA-7898

5.25" Disk size small form factor, Socket 370 base embedded board with 6x LAN for networking applications

SBC



EB-5810
Networking Platform for 1U 19" RackMount Solution



EB-5800
Networking Platform for Desktop Solution



RACK-2340
High-end Networking Platform for 19" Rackmount solution

SPECIFICATIONS

- ◆ 1U Height 19" Rackmount Networking Server
- ◆ Drive Bays: Two internal 3.5" HDD drive bay
- ◆ Cooling Fan: Three 4 cm ball bearing cooling Fan
- ◆ Front panel support one Compact Flash Type II and one USB port
- ◆ I/O: K/B x 1, Mouse x 1, Print Port x 1, RS-232 x 1
- ◆ Power Supply: Equipped with ACE-816AP power supply
- ◆ Embedded NOVA-7898 embedded board
- ◆ Vibration: 5~17Hz, 0.1" double amplitude displacement 17~640 Hz, 1.5G acceleration part to part
- ◆ Shock: 10G acceleration part to part (11ms)
- ◆ Color: Dark Blue(Pantone-433C)
- ◆ Depth: 400mm
- ◆ Net/GW : 6/8(kg)

| LAN Port | LAN module # | LAN Carry card |
|----------|--------------|----------------|
| 2 | 0 | - |
| 4 | 1 | - |
| 6 | 2 | - |
| 8 | 3 | v |
| 10 | 4 | v |

LAN module: LM-102N-X59, LM102N-X50, LM-102R, LM-2GN

LAN carry card: MLAN-104, MLAN-104SSL Note: Due to the limitation of PCI specification, please be aware of Gigabit Ethernet application.

Note: Due to the limitation of PCI specification, please be aware of Gigabit Ethernet application.

ORDERING INFORMATION

- **RACK-2340/ACE-816AP**
High-end Networking Platform for 19" Rackmount solution. Included ACE-816AP
- **RACK-2340LCM/ACE-816AP**
High-end Networking Platform for 19" Rackmount solution. Included A125 LCM and ACE-816AP

SPECIFICATIONS

- ◆ Support Intel server level processor Tualatin CPU up to 1.4GHz
- ◆ Optional one A125 16x2 characters LCD display module with RS-232 interface
- ◆ Support NOVA-7898 embedded board.
- ◆ Equipped with ACE-816APS (with PFC) 150W industrial power supply.
- ◆ Standard equipped with dual Intel 10/100 Mbps LAN.
- ◆ Optional Socket PCI add-on LAN module supports system up to six LAN port.
- ◆ Color: Dark Blue (Pantone 433C)
- ◆ Dimensions: EB-5800: 325(W)x44(H)x300(D)mm
- ◆ EB-5810: 431(W)x44(H)x250(D)mm

ORDERING INFORMATION

| | A125 LCD Module | Full Function | HDD Drive Bay |
|-------------|-----------------|---------------|---------------|
| EB-5800 | | | 1 x 3.5" |
| EB-5800LCM | Yes | | 1 x 3.5" |
| EB-5800F | | Yes | 1 x 3.5" |
| EB-5800FLCM | Yes | Yes | 1 x 3.5" |
| EB-5810 | | | 1 x 2.5" |
| EB-5810LCM | Yes | | 1 x 2.5" |
| EB-5810F | | Yes | 1 x 2.5" |
| EB-5810FLCM | Yes | Yes | 1 x 2.5" |

Notes: Full function means USB, PS/2, VGA, Parallel, Audio connector on the rear side of chassis

- **EB-5800XXX / ACE-816APS** Networking Platform for Desktop Solution
 - **EB-5810XXX / ACE-816APS** Networking Platform for 1U 19" RackMount Solution
- Note:** EB-5810 ship with rackmount kit

SPECIFICATIONS

- ◆ CPU: Supports Intel® Tualatin Socket-370 PIII/ Celeron™ 133MHz FSBand VIA C3 Nehemiah (PPGA Celeron is not support)
- ◆ System Chipset: Intel 815E-B step
- ◆ System Memory: Up to 512MB (2x 168pin DIMM)
- ◆ Display: Chipset integrated AGP 4X
V-RAM: share with system memory by Dynamic Video Memory Technology
Resolution: max. 1600 x 1200, 8 bit colors for CRT
Connector: external DB-15 for CRT display
- ◆ I/O:
External: One RS-232, one VGA, one LPT port connector
Internal: One RS-232, IrDA port, two USB by pin-header
IDE: Two ATA-100 channel (1x40 pin header), 1x44 pin header
- ◆ Ethernet: External RJ-45x6
Intel 82562 and 82559 10/100Mbps Ethernet controllers onboard up to 6x LAN with LAN module daughter board, LM-102N (Dual i82559/i82550), LM-2G (Dual Broadcom 5701/5703 Gigabit chip) or LM-2GN (Dual Intel 82540 Gigabit chip)
- ◆ Expansion: 1x PCI 32bit/33MHz slot
2x socket PCI connector for LAN Module daughter board
- ◆ WDT: Software programmable, support 1~ 255 sec. system reset
- ◆ Power function: Supports ATX power
- ◆ Power Connector: ATX 2.03 1x20pin ATX connector
- ◆ Power Consumption: 5V@9A, 3.3V@3.1A, 12V@0.2A, -12V@0.02A (933MHz CPU with 256MB)
- ◆ Relative Humidity: 5~95%, non-condensing
- ◆ Operating Temperature: 0~60°C
- ◆ Dimensions: 203 x 146 mm (8" x 5.8")
- ◆ GW: 900g

ORDERING INFORMATION

- **NOVA-7897** Socket 370 base embedded board with CRT VGA /Dual LAN/Audio
- **NOVA-7898** Socket 370 base embedded board with CRT VGA /Dual LAN/Audio (Printer port, VGA port by pin header)
- **LM module (Socket PCI connector)**
LM-102N-x59 Dual i82559 LAN Module
LM-102N-x50 Dual i82550 LAN Module with IPsec Engine
LM-102R Dual Realtek 8100 LAN Module
LM-2G Dual Broadcom 5701/5703 Gigabit LAN Module
LM-SSLA SSL Accelerator Module
LM-2GN Dual Intel 82540/82541 Gigabit Ethernet Module
- **CB-USB02** Dual ports USB cable with bracket