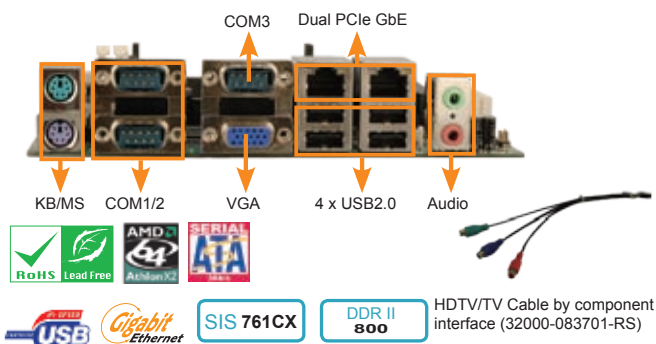
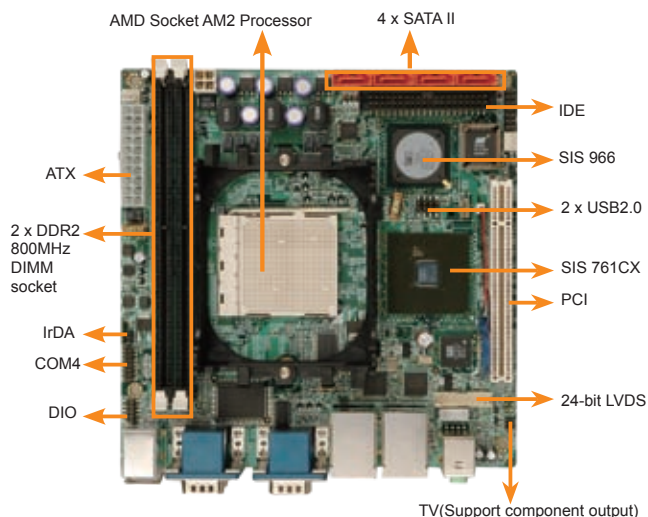


KINO-761AM2

Mini-ITX Motherboard, with AMD Socket AM2 for AMD Athlon™ 64, AMD Athlon™ 64 X2 Dual-Core, AMD Sempron™ CPU with VGA, Dual PCIe GbE, USB 2.0, SATAII and Audio



Specifications

- ◆ CPU
AMD Athlon™ 64, AMD Athlon™ 64 X2 Dual-Core, AMD Sempron™ Socket AM2 processor with 2000MHz HyperTransport™ technology support
- ◆ System Chipset
SIS 761CX + SIS966
- ◆ BIOS
AMI Flash BIOS
- ◆ System Memory
2 x 240 PIN dual channel DDR2 400/533/667/800 MHz up to 4GB
- ◆ Ethernet
Dual Broadcom BCM5787M PCI Express GbE chipsets
- ◆ I/O Interface
3 x RS-232
1 x RS-232/422/485
6 x USB 2.0
4 x SATAII with RAID 0, 1, 10 and JBOD
1 x IDE
2 x PS2 for KB/MS
- ◆ Expansion
1 x PCI
- ◆ Digital I/O
8-bit digital I/O, 4-bit input/ 4-bit output
- ◆ IrDA
1 x IrDA by pin header
- ◆ Super I/O
W83697HG
- ◆ Display Interface
VGA Integrated in SIS 761CX
Composite output for NTSC/PAL TV out function
Component output for upto 1080i HDTV out function
and 24-bit dual channel LVDS by SiS 307LV (KINO-761AM2-LVDS only)
- ◆ Audio
AC'97 codec with Realtek ALC655
- ◆ Watchdog Timer
Software programmable supports 1 ~255 sec. system reset
- ◆ Power Supply
ATX Power
- ◆ Power consumption
5V@6.83A, 12V@8.98A, 5Vsb@ 0.23A
(AMD Athlon™ 64x2 5000+ 2.6GHz/1000MHz CPU with 1GB DDR2 667MHz)
- ◆ Temperature
operation: 0°C ~ 60°C (32°F ~ 140°F)
- ◆ Humidity
operation: 5% ~95% non-condensing
- ◆ Dimension
170mm x 170mm
- ◆ Weight
GW: 1100 g / NW: 420 g

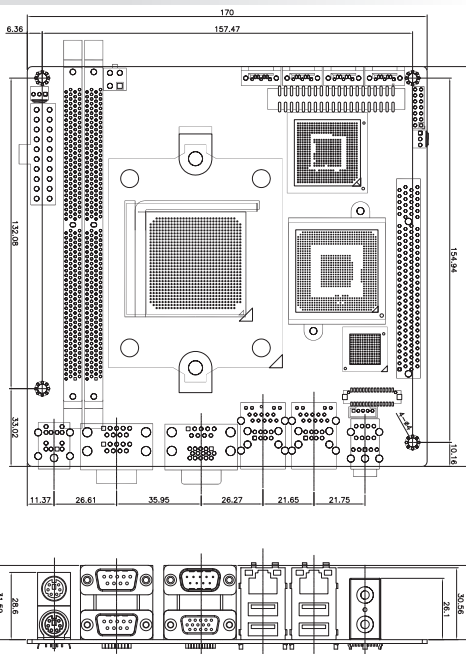
Packing List

- 1 x KINO-761AM2 Single Board Computer
- 1 x Mini Jumper Pack
- 1 x ATA66/100 Flat Cable (P/N: 32200-008800-RS)
- 2 x SATA cable (P/N: 32000-0628000-RS)
- 1 x SATA Power cable (P/N: 32100-088600-RS)
- 1 x I/O Shielding (P/N: 41003-0186C00-00-RS)
- 1 x Utility CD
- 1 x QIG

Features

1. Mini-ITX Form Factor and RoHS compliance
2. AMD Athlon™ 64, AMD Athlon™ 64 X2 Dual-Core, AMD Sempron™ processor with 2000MHz HyperTransport™ technology support
3. Support DDRII 800MHz up to 4GB
4. Support VGA, 24-bit dual channel LVDS and HDTV output (optional)
5. 4 x RS-232, 6 x USB 2.0 and 4 x SATAII RAID

Dimensions



Ordering Information

Part No.	Description
KINO-761AM2-R10	Mini-ITX Motherboard, with AMD Socket AM2 for AMD Athlon™ 64, AMD Athlon™ 64 X2 Dual-Core, AMD Sempron CPU with VGA, Dual PCIe GbE, USB 2.0, SATAII and Audio
KINO-761AM2-LVDS-R10	Mini-ITX Motherboard, with AMD Socket AM2 for AMD Athlon™ 64, AMD Athlon™ 64 X2 Dual-Core, AMD Sempron CPU with VGA/LVDS/HDTV, Dual PCIe GbE, USB 2.0, SATAII and Audio
32000-083701-RS	HDTV/TV Cable with Component Output (pin header 2.54 mm pitch)
CF-AM2-RS	CPU Cooler (89mm x 69mm x 30mm, 46W)
CF-519-RS	CPU Cooler (92mm x 92mm x 67mm, 115W)
32200-026500-RS	RS-232/422/485 cable
24105-000029-RS	AMD® Athlon 64x2 Dual Core 3400+, 1.8GHz; 512KBx2, 1000MHz, FDP35W, Socket AM2(940pins), RoHS
24105-000052-RS	AMD® Athlon 64 Single Core 3000+, 1.8GHz; 512KB, 1000MHz, FDP35W, Socket AM2(940pins), RoHS